

THE MOOSPAPER

Brunswick district community newsletter - Est. 2001

\$2.00 PER PRINTED ISSUE - ONLINE SUBSCRIPTIONS AVAILABLE

MAGGIE'S MUSINGS

Page 2

SUDOKU

Page 3

LIONS TALES

Page 4

BOOK REVIEWS

Pages 7

STAYING IN PLACE

Page 8 & 9

HEALTH GUIDE

Page 12

SCHOOL HOLIDAY

Page 14

COMMUNITY HAPPENINGS

Page 15

"Campfire Connections" -Thanking our Brunswick Community Volunteers

TINA WALLIS

National Volunteer Week 2025 saw local celebrations for the volunteers in the Brunswick community across two events: A Thanksgiving Service at St Peter's Church on Wednesday, 21 May and an early evening gathering at the Brunswick Community Resource Centre the following night.

Gathered around the fire pit in the community garden, volunteers from a range of organisations came together to share the warmth and friendship that connects the people and the community.

Supported with funding from Lottery West and Volunteering WA, a fine feast of hot soup and bread, with beef and gravy rolls, was washed down with great company and cheer!

Thanks to our local fire officer for approving a permit to light up the fire, we were certainly lucky to have an ensuing short downpour to extinguish the flames. Not enough to dampen the spirits though, as new and existing volunteers were able to spend time together and exchange stories and experiences gained through their volunteering roles.



Sharing stories with fellow volunteers and a tasty supper around the campfire



Supported by:



MAGGIE'S MUSINGS

MARGRET CARBONE



Happy WA Day from the Moospaper! We hope everyone is enjoying the official start to winter and celebrating our great state!

Our area has two new local Members of Parliament to represent us, following the state election held in March and the federal election held in May. The state seat of Murray-Wellington is now held by the Liberal Party's David Bolt, having been in Labor hands since 2017 with member Robyn Clarke. Many locals have met Mrs Clarke during her visits to Brunswick over her two terms as our state MP, and locals have already had a chance to meet Mr Bolt at recent football matches and other events in town. The federal electorate of Forrest has remained Liberal territory, with new member Ben Small elected to the role vacated by Brunswick-raised Nola Marino. Mrs Marino has retired from politics after holding the position for 17 years.



In Shire news, the Shire of Harvey was advised a few months ago that the Food Organics Garden Organics bin will be temporarily directed to landfill due to the unmanageably high levels of contamination. Residents are encouraged to keep separating rubbish using the three-bin system to which we are now accustomed, as the landfill option is only a short-term measure while alternatives and solutions are being investigated. Let's keep sorting household waste and follow the guidelines of the "Be a GREAT Sort" campaign!

For football fans, Harvey-Brunswick-Leschenault will play two home games this month, hosting Collie at Brunswick Oval on Sunday, 22 June followed by Bunbury on Sunday, 29 June. Training is held Tuesday and Thursday evenings. Don the maroon and gold to cheer on the Lions in 2025!

Don't you just **LOVE** Brunswick?



- Angela and Mark Talbot of Brunswick on the arrival of their first grandson, Henry Mark, first-born for Craig and Nicole.
- Harvey-Brunswick-Leschenault Football Club's Josh Tartaglia on his 50th game, Keegan Fortescue on his 150th Reserves game and Lauren Patane on 100 games. Keegan is a five-time Reserves premiership player and has also played an impressive 132 League games. Lauren makes club history, being the first player to reach 100 games since ladies' football "AFLW" began at the club.





Welcome to Makuru!

The season in Noongar culture recognised as the Season of Fertility, as animals prepare for breeding. Spanning June-July, Makuru is the coldest and wettest time of the year here in the South West.

Traditionally, this was a good time of the year to move back inland from the coast, as the winds turned to the west and south, bringing the cold weather, rains and occasionally, snow on the peaks of the Stirling and Porongurup Ranges.

Makuru is also a time for a lot of animals to be pairing up for breeding in the coming season. You might see pairs of ravens (wardongs) flying together and you might see an influx of black swan or 'Mali' around the rivers and lakes, as they too prepare to nest and breed.

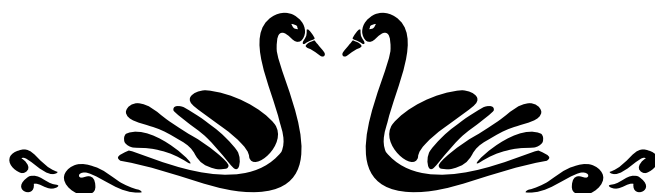
Flowers that will start to emerge include the blues and purples of the blueberry lily (*Dianella*) and the purple flags (*Patersonia occidentalis*)



Give your mind a workout with this Sudoku puzzle!

Fill each of the 3x3 squares and also each row and column with the numbers 1-9 and to solve the puzzle.

| | | | | | | | | |
|---|---|---|---|---|---|--|---|---|
| | | 9 | | | | | 2 | |
| 8 | 7 | | 4 | 2 | | | | |
| 1 | 4 | | | | 9 | | 7 | |
| | | | | | | | 4 | |
| | 1 | | | | | | 8 | |
| | | 7 | 1 | | | | | |
| 5 | | 3 | | | | | 1 | |
| | 2 | | 5 | 9 | | | | 7 |
| | | 8 | | | 4 | | 9 | |



COBBER
DOG FOOD

FROM
\$69.50



WHISKAS
CAT FOOD 24
PACK
\$62.50



ROSSI BOOTS
FROM
\$175.00



brunswick
rural agencies

Hardware, Farm Supplies, News & Lotto Agents
Ph: 9726 1557 36 Chumney Rd, Brunswick Junction WA 6224

7am-5.00pm
Monday-Friday

Saturday 7am-12pm

97 261 557

Jarrod: 0488 932 279

Lions Tales

Ron Arkwright



ANZAC Day 25th of April, once again the Brunswick Junction townspeople came out in full force, with the Brunswick Lions Club offering full support.

The work the Lions had put in earlier in the month helped in making the Brunswick War Memorial the beautiful image it displayed on the day.

The Meeting on the Hill

Every year, the Brunswick Lions Club holds one of its meetings on the Hill, in commemoration of a time early in the history of Brunswick Junction. A tribute to when a young boy, Riley, fell ill to one of the many deadly diseases common in those days.

Riley's parents decided to take to the bush track between the Wood Mill at Williams to reach the only medical care available at Bunbury.

Unfortunately, Riley passed away before reaching help and his parents buried his body on the Hill overlooking the town of Brunswick Junction.

The Talbot family, who now own the property, decided to place a plaque at the area of the grave to remember a tragic time of days gone by.



Above left: The plaque, marking the site. Right: Two of our members enjoy the fellowship that the meeting on the Hill brings.

Our club secretary, Mike, visited the Lions Myalup Pines Cottages to pass on a cheque to the cottage Chairperson, Alan Hawkins, as a donation from the Brunswick Lions Club.

During his visit, Mike arranged for a plaque to be displayed in the cottages' recreational hall, showing the name of deceased Brunswick Lions member Bev Dungey, to show appreciation for the work Bev gave during his involvement with the upkeep of the Pine Cottages.



Brunswick Lions Club secretary, Mike with Pine Cottages Alan Hawkins.



Brunswick Junction Lions Club

Active in the community
New members always welcome

Contact for more information
0429197060 OR 0434 420077




Australia Day Breakfast

Helping out the Riding for Disable

BRIDGESTONE

**12 Papps Road
Brunswick Junction
Western Australia 6224**

**08 9726 1296
Monday - Friday
8am - 5pm**



Tires are for illustration purposes only

Brunswick Family Pharmacy



Monday - Friday
9am to 5pm

Phone: 9726 1000

Specials



Quilton 10pk
\$6.95



Radiant \$2.99



GOT 15 MINUTES TO BURN?

**15 MINUTES IS ALL IT
TAKES TO MAKE A PLAN.
OR LOSE IT ALL.**



Scan the QR code to
start your bushfire plan.



EARTH MOVING CONTRACTOR

A.H. GEORGE & SONS
BRUNSWICK A.B.N. 88 821 843 678

- Sand, Gravel, Limestone, Loam, Metal, Dust & Rock
- Track Loaders 963, 973
- Wheel Loader
- Skid Steer
- Float Tri-axle
- Trucks
- Grader
- Back Hoe
- Excavator 30 Ton



**SPECIALISING IN SMALL RURAL HOLDINGS,
DAM AND ROAD CONSTRUCTION AND
CLEARING, STUMP REMOVAL AND
EROSION CONTROL.**

Contact Rob George:
Mobile: 0417 173 553

Chickens become secret weapon in war on foxes

Peel Harvey Biosecurity Group

Landholders are used to keeping predators away from chickens, but one landholder is using his feathered friends to win the fight against foxes.

Brunswick landholder Mike Jack has caught four foxes in just a few months—without bait, carcasses, or his chooks going off the lay—thanks to the clever integration of a fox trap into his chicken coop.

The trap, positioned directly beneath where the chickens roost, exploits foxes' natural behaviour.

"They sneak around the pen and lo and behold—there's a nice hole in the side. They can't help themselves," said Mike.

Mike built the chicken coop himself, making it fox-proof—impossible to dig under or break into—and fitted it with an automatic door so the chooks put themselves to bed each night.

He further customised the coop to suit the trap by cutting a hole in the hen house just big enough for it and placed the bulk of the trap inside the house, with the mouth of the trap jutting out from the wall. He also added star pickets for stability. Each evening, Mike simply lifts the trap's door and sets the catch before heading inside.

Asked how he came up with the idea, Mike laughed.

"It's logical," he said. "I was thinking about how I wanted to bait the trap, but most people use a dead chook or something like that. I didn't want anything stinking up the place."

It's proven to be a practical and humane solution, with no need for bait and no ill effects on the hens or egg-laying.

"That was my one concern," said Mike, when asked how the chooks reacted to foxes being caught in the coop. "But no, no behavioural changes at all. They don't seem to care."

Mike sourced the trap from Peel-Harvey Biosecurity Group (PHBG) after seeing it at a local agricultural show.



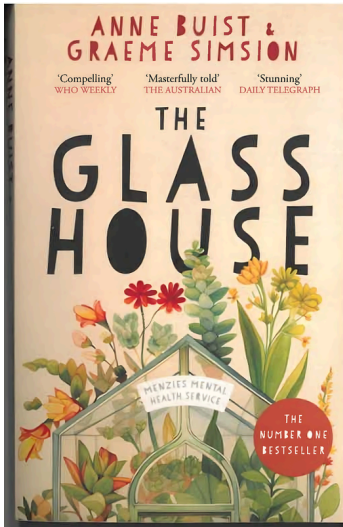
"I was at the Harvey or Waroona show, saw PHBG's tent, and noticed the fox trap—it was longer and better quality than most of what you see out there. I asked if I could buy one, but when I said I was a local landholder PHBG offered to drop it off, for free! That was brilliant."

As a recognised biosecurity group, PHBG offers a free lending library of pest control equipment to help local landholders—like Mike—tackle invasive species besides foxes, including rabbits, feral pigs and weeds.

Landholders can be kept up to date with the activities of PHBG by following the group on Facebook, visiting the website www.PHBG.org, and subscribing to receive the quarterly seasonal newsletter, which provides information on seasonal control activities, upcoming events and emerging biosecurity threats.



Book Nook Book Reviews by Janette McLean



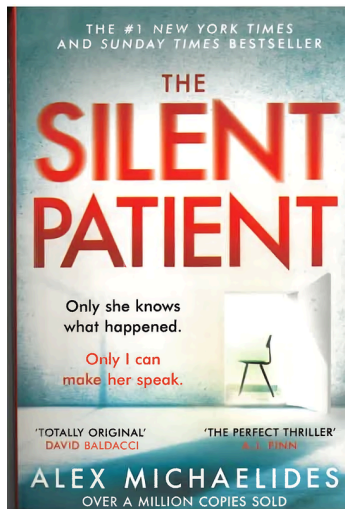
The Glass House, written by husband and wife team Anne Buist and Graeme Simsion tackles the sensitive issues surrounding mental health.

The main character Hannah, a dedicated registrar in a psychiatric ward takes us on a daily journey of life in the centre where we are introduced to a variety of patients each dealing with a different aspect of mental health.

Hannah and her close-knit team take us on a learning journey of the trials and tribulations of dealing with patients and their individual psychiatric problems whilst dealing with their own demons.

Although the book is entirely fictional, Anne Buist has dealt with the subject matter very sensitively.

A good read.



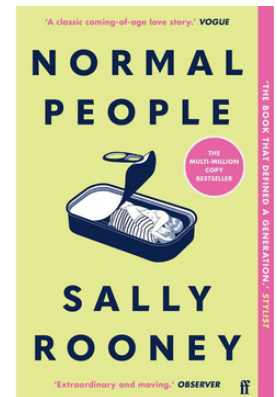
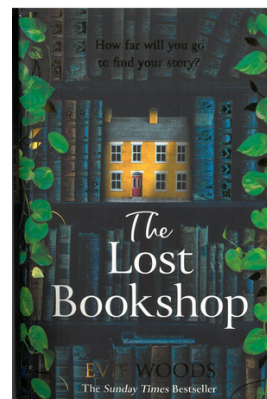
Alex Michaelides' The Silent Patient

"I honestly couldn't put the book down!"

An intriguing story about a woman who murders her husband then refuses to speak a word! She is subsequently admitted to a psychiatric ward where her psychologist Theo tries to break through her silence to understand what happened. The ending is totally unexpected! A great read for those who like thrillers.

The Lost Bookshop by Evie Woods

An intriguing story that flits between present day and the war years of the early 1900's. The author cleverly intertwines three characters on a journey of intrigue, fantasy and history. The Three main characters, Opaline, Henry and Martha are all connected in different ways to a disappearing bookshop and the author takes us on a whimsical journey to help solve the puzzle. A page-turner!



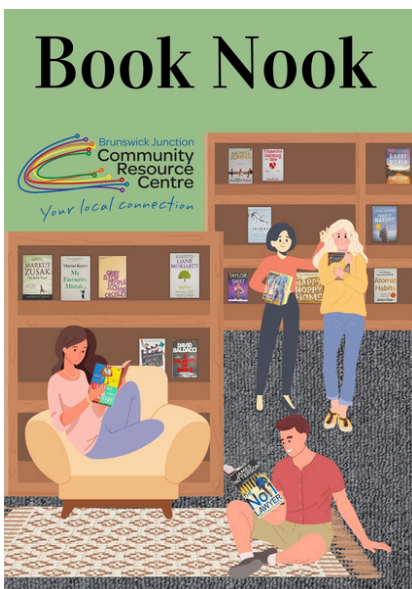
Normal People by Sally Rooney

What a brilliant writer. The story follows a young high school couple in the throws of first love. A bit like Romeo and Juliet but without the tragic ending although the ending does leave you up in the air!

The author leads us through the difficulties facing adolescents in the search for finding themselves and trying to appear 'normal'.

Topics such as sex, drug use, peer pressure, family dynamics, class differences, living away from home, loneliness and suicide are but a few of the issues facing this young couple as they struggle with their relationship. Extremely well written and sensitive.

Highly recommended although some sex scenes may be difficult for some readers!



Brunswick's "Book Nook" has new Bestseller titles added regularly. If there is a favourite author that you like to follow and would like to add to our library collection, please let us know your choice for recommendation. Call in to the CRC or phone us 9726 1452



BRUNSWICK JUNCTION

Available for 65+
yrs or 50+yrs
Aboriginal or
Torres Strait
Islander

Australian
Government
Support at
Home program

From home
duties
(cleaning, gardening)
to social outings
(Shopping, Catch Ups (and
more)

Your choice,
control and
flexibility

We help connect
the Support at
Home with local
networks

Stay in your own
home with a
Support at Home
program, tailored
to your needs.

**We are community-based, connecting locals
with the levels of support required**



(08) 9726 1452



brunswickwa.com/bjcrc



brunswickjunctioncrc@gmail.com



Brunswick Junction
Community Resource Centre
Your local connection

Brunswick Connects with Support at Home Services

Tina Wallis

If you are registered with an existing home care provider, you will have recently been notified of some upcoming changes coming into effect on 1 July 2025. The changes include a switch from the 'Home Care Packages' (HCP) model to the new "Support at Home."

The key differences will affect anyone who has been previously assessed for home care services, following the outcome of the Productivity Commission Report. This model places all home care package providers under specific guidelines to help present the client with an informed and balanced choice of provider.

Initiated by Pingelly CRC, the 'Staying in Place' programme will ensure 'Support at Home' is delivered to offer greater agency (or power) for the client and for the client's family to be the BOSS.

The client can decide which people they want to provide help in the home, as long as they are registered with a recognised employment agency, such as Mable. (They could be people you already know, and the CRC can help them to become Mable contractors.)

Under the Staying in Place programme, you decide which days and at what times you want the service, and you can change that as it suits you.

Identifying the client as the boss, you can make a change of support contractor at any time, for any reason. The contractor will do the work the client wants (so long as it is included in the program), the way the client wants.

This also provides greater flexibility for the support workers or contractors, and the Productivity Commission Report clearly outlines why people will prefer to work under this model rather than in a direct employment model.

This approach achieves balance from both sides, for clients and contractors, allowing people to work around the other aspects of their lifestyle: kids at school, golf days, seasonal work like farming, etc. They do not need to put in a slip for holidays or other absences. Most of the work does not require formal qualifications – just life experience, a good heart and a good soul.

The Client is the BOSS!

Contractors are required to register for an ABN to become an independent contractor with Mable and all insurances are covered. They are not under an award that restricts what they can and cannot do – i.e. they can move furniture to clean and reach above their shoulder height. They can do a welfare check in 15 minutes and are not required to work a minimum of two-hour time slots. They are contracted to the client – not the provider.

Staying in Place builds social support into the work – so the gardener or the cleaner are all part of a social network for the client helping them to feel connected, secure, and supported in a more general sense. Our program recognises the equal importance of the social aspects of ageing (equal to physical, mental and cognitive) and builds these into every interaction with the client, helping to prevent isolation and loneliness.

Some changes will be seen, for example, in the classification of funding levels or tiers

Classification Quarterly budget
Annual amount

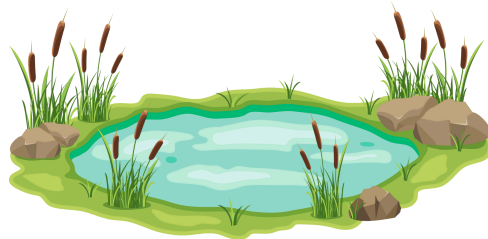
Under the previous Home Care Packages
4 Tiers or Levels were identified:

| | | |
|----------|-----------------|-----------------|
| 1 | \$2,708 | \$10,833 |
| 2 | \$4,762 | \$19,049 |
| 3 | \$10,365 | \$41,460 |
| 4 | \$15,713 | \$62,853 |

Under the new Support at Home these
levels will be reclassified as:

| | | |
|----------|------------------|------------------|
| 1 | ~\$2,750 | ~\$11,000 |
| 2 | ~\$4,000 | ~\$16,000 |
| 3 | ~\$5,500 | ~\$22,000 |
| 4 | ~\$7,500 | ~\$30,000 |
| 5 | ~\$10,000 | ~\$40,000 |
| 6 | ~\$12,000 | ~\$48,000 |
| 7 | ~\$14,500 | ~\$58,000 |
| 8 | ~\$19,500 | ~\$78,000 |

Further information is available for
transitioning of existing packages



Event: Learn what an enhanced farm dam could achieve on your property

How can farmers improve livestock production, support biodiversity and reduce farm emissions all at the same time?

The answer is enhancing farm dams.

By fencing out livestock and revegetating around dams, water quality can be improved, leading to more weight gain in animals. Revegetation also increases water quality and provides habitat for critters. And on top of all that, improved wetland health means a reduction in greenhouse gas emissions.

In partnership with South West NRM, Leschenault Catchment Council is hosting an event on Thursday, 26 June at Evedon Park to raise awareness about the benefits of enhancing farm dams.

The event will look at what enhancing a dam looks like and how emerging carbon and biodiversity markets could support landholders to fund this work in the future.

How does enhancing a farm dam link to carbon markets you might be wondering?

When manure and fertilisers enter a dam, it can become an emitter of greenhouse gases like methane. Fencing and revegetating around dams can significantly reduce emissions and carbon in the atmosphere creating potential for funding opportunities through carbon markets.

A recent study found enhanced dams recorded lower levels of nitrogen and phosphorus and higher levels of dissolved oxygen. The result was a 56% reduction in methane emissions compared to typical dams!

With governments around the world encouraging strategies that will reduce emissions, many businesses are looking for ways to offset their own emissions by supporting reductions that occur elsewhere - such as on farms!

With almost 2,000,000 dams across Australia, this seems like a win-win. And to sweeten the deal, the Australian Government is supporting development of "Carbon and Biodiversity" markets farm projects can be sponsored and carbon credits traded.

To learn more, we'll hear on the day from a carbon market consultant and from South West NRM about their new demonstration site at Thomson Brook where they are monitoring changes in greenhouse gas emissions and stock water quality.

Plus LCC will look at examples of other local dams that have fenced and revegetated in the past and provide advice for planning and managing vegetation around dams.

To register interest and further details, email LCC's Tony Battersby tony.battersby@leschenaultcc.org.au or phone 0497 409 292.

GET
NAKD
@ H O M E



Supporting rural WA

The Naked Coffee roasters is located in Albany, Western Australia and we love supplying rural WA with its coffee needs. Are you a home barista wanting freshly roasted coffee beans delivered to your PO Box or door?

Scan the above QR code and be taken directly to our online store. Sign up and receive 10% off your first order, or better yet become a subscriber to our monthly coffee deliveries and receive 10% off every order.

Use the code: **getNKDrural**

And receive a further 10% off your first order

thenakedbean.com.au

NAKED

COFFEE ROASTERS

Your Local Health Guide

Staying healthy and having access to reliable medical services is essential. Here's a quick guide to the local health services in the Brunswick Junction area, including pharmacy hours, doctor appointments, emergency services, and more!

Brunswick Family Pharmacy

Opening Hours:

Monday to Friday
9:00am-5:00pm

Location: 43 Ommaney Rd Brunswick Junction

Contact:

Phone: (08) 9726 1000
Email: pharmacist.bjfp@gmail.com

Additional Info:

- Accessible parking, wheelchair accessible
- Free Parking
- Mixed Billing



Wellington Medical

Opening Hours:

Every Thursday
From 12:30PM

Location: 3 Ridley St, Brunswick WA 6224

Contact:

Phone: (08) 9729 1064
Email: wellmed@wn.com.au

Additional Info:

- Appointments necessary
- Inside the St John's Sub-station
- Bulk billing available for concession cardholder, pension cardholders and anyone under 15 years old



The Health Hub at Eaton Fair

Opening Hours:

Monday to Friday: 8AM to 6PM
1st of Every Saturday of the month: 9AM to 1PM

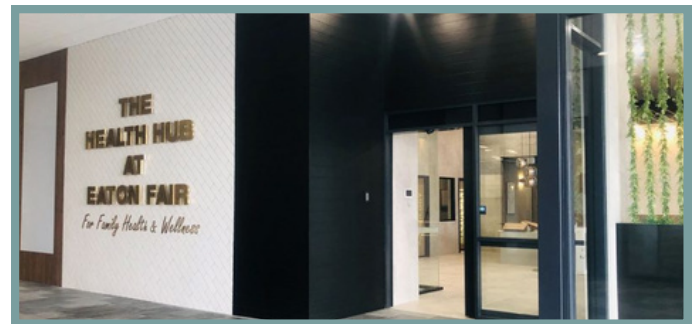
Location: Shop 82 Eaton Fair Shopping Centre, 2 Recreation Dr, Eaton WA 6232

Contact:

Phone: (08) 9785 6000
Email: admin@healthhubeatonfair.com

Additional Info:

- Bulk billing may be available for standard consultations for eligible patients, such as children, pensioners, and concession cardholders.



Fire & Emergency Services

For All Emergencies You Can Call 000

St John's Brunswick

Phone: (08) 9791 4999

Brunswick Junction Fire & Rescue

Phone: (08) 9726 1268

Non-Emergency Police:

Phone (Australind): (08) 9797 0222
Phone (Bunbury): (08) 9722 2111

State Emergency Services (S.E.S)

Phone (Australind): (08) 9797 2451
Phone (Bunbury): 132 500



South West Aboriginal Medical Services (SWAMS)

Opening Hours:

Every Tuesday
From 10AM - 3PM

Location: 3 Ridley St, Brunswick WA 6224

Contact:

Phone: (08) 9791 1166

Additional Info:

- Appointments preferred
- Inside the St John's Sub-station



Kindy 2026



Enrolments are now OPEN

**If your child is born between
1st July 2021 and 30th June 2022,
they are able to start Kindy in 2026.**

Come into the office for an
Enrolment form and once completed
return it to the school with a copy of
your child's birth certificate and
Immunisation record.



**Enrolments close on Friday
25th July 2025**

Please contact the school on 9788 9100 or
brunswickjunction.ps@education.wa.edu.au
with any questions.



Ludlow Art Prize

October 25th to November 2nd

Entries are now open

Australian Landscape Painting \$5000 first prize

Sculpture \$5000 First Prize

Peoples choice awards in both categories \$1000

Entries

www.ludlowtuartforest.org.au

Entries close October 10th 2025

Ludlow Mill Settlement, 21 Ludlow Rd North



shining a light on the critically endangered Tuart Forest

Winter School Holidays

Narelle Read



It's not long until we will be welcoming the school holidays, 5 July - 20 July. Time to start planning some fun things that we can do with the children.

Brunswick Junction Community Resource Centre will be hosting a Paint, Sip & Crunch, so keep an eye on our Facebook page for the latest updates on these events, as they do tend to book up fast.

Bunbury Library also runs a range of activities through the holiday period. You can check out their 'What's On for Kids' on their Facebook page or website.

Of course, there is plenty to do outside too! Now that it has finally cooled down, you could go on a Gnome hunt or even paint or decorate a Gnome and set them free with their friends at Gnomesville.

Even a day at the beach can be fun in Winter, beachcombing, you'll find things that wash up after storms that you've never seen before. You may even find a lost turtle (if you are lucky, not so for the turtle). Call the Dolphin Discovery Centre for help.

In fact, the Dolphin Discovery Centre is a great place to go on those rainy days to get the children out of the house, explore the sea life and calm your mind with a coffee in the café.

With so much to do around the South West, whether summer or winter we are lucky to have such a rich variety of hot spots, you just need to get out there to look and find fun things to do.

Remember, there are only limited holidays to enjoy with your children, before they grow up - make the most of exploring together!



Plenty of Room for Growth!

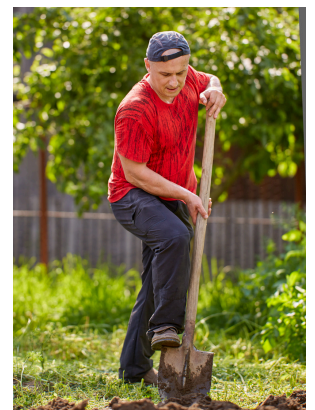
It seems, at last, we are going to welcome the long-awaited rain that all gardeners and farmers will be very pleased to receive.

We are preparing the beds in the community garden with a range of winter veggies and wondered what everyone else is going for this year?

There are all the usual 'suspects' to consider, but if you think there is something extra special worth including, we'd love to hear about your choices.

| | |
|---|------------------------|
| Broad Beans | Harvest from September |
| Garlic | Harvest from November |
| Lettuce | Harvest from August |
| Mizuna | Harvest from July |
| Mustard greens | Harvest from July |
| Parsley | Harvest from August |
| Peas | Harvest from August |
| Radish | Harvest from August |
| Snow Peas | Harvest from September |
| Spinach | Harvest from July |
| Strawberries (from seeds) | Harvest from 12 months |
| Strawberry Plants | Harvest from October |

*Garden Humour:
"Dad always called a spade, a spade, except when he tripped over one in the garden"*



COMMUNITY HAPPENINGS



1st and 3rd Tuesday of Every Month

10:30AM TILL 11:15AM

EFTPOS ONLY

Please remember to bring your own bags



BRUNSWICK JUNCTION COMMUNITY GARDEN

OPEN

TUESDAY-FRIDAY 9AM-3PM

MEETINGS EVERY 3rd SATURDAY OF THE MONTH

AT 9AM

BRUNSWICK JUNCTION COMMUNITY RESOURCE
CENTRE



Paint & Sip



Saturday 28th June 2025

6:00 - 8:00 PM

Enjoy a night out with friends and create a
unique masterpiece on a canvas.

All equipment, nibbles and non-alcoholic
beverages included.
BYO alcohol

**TICKETS \$45 PER PERSON
(NON-REFUNDABLE)**

Follow our Facebook page for info on
upcoming events and online booking
instructions



JUNIOR PAINT, SIP & CRUNCH

MONDAY 7TH, JULY 2025

A FUN SESSION SUITABLE FOR AGES
8 TO 15 YEARS OLD.

\$25 PER TICKET INCLUDES
ALL PAINTING EQUIPMENT SUPPLIED &
MORNING TEA

FROM 9.30AM -11.30AM

Follow our Facebook page for info on
upcoming events and online booking
instructions

BRUNSWICK COMMUNITY CALENDAR

JUNE 2025

| SUN | MON | TUE | WED | THU | FRI | SAT |
|-----|---|------------------------|--|---|---------------------------------------|------------------------------|
| 01 | 02 West Australia Public Holiday | 03 FOOD BANK at CRC | 04 | 05 WALKING GROUP 9am After School Kidz Club 3-4.45pm | 06 Late Night Youth Group 4.30-8pm | 07 |
| 08 | 09 Over 55's exercise group 8.30am | 10 | 11 Mahjong 12-3pm Bowling Club Singing Group 4-5pm | 12 WALKING GROUP 9am After School Kidz Club 3-4.45pm | 13 Late Night Youth Group 4.30-8pm | 14 |
| 15 | 16 Over 55's exercise group 8.30am | 17 FOOD BANK at CRC | 18 Mahjong 12-3pm Singing Group 4-5pm | 19 WALKING GROUP 9am After School Kidz Club 3-4.45pm | 20 Late Night Youth Group 4.30-8pm | 21 |
| 22 | 23 Over 55's exercise group 8.30am | 24 | 25 Mahjong 12-3pm Singing Group 4-5pm | 26 WALKING GROUP 9am After School Kidz Club 3-4.45pm | 27 Late Night Youth Group 4.30-8pm | 28 Paint & Sip |
| 29 | 30 Over 55's exercise group 8.30am | | | | | |

Notes: The deadline for articles for each edition the Moospaper is 15th of each month.



Moospaper

Brunswick District Community newsletter
Produced by Brunswick Community Resource Centre

Contacts: 1 Ridley Street, Brunswick WA 6224
Ph. 9726 1452 Email: moospaper@gmail.com

Periodicity: 11 issues a year, from February (no issue in January).

Policy: Articles included at the editor's discretion and may be edited for clarity and space. Published articles become public domain and may be reproduced at any time. Advertising rates: Quarter page - \$15 Half page \$25

Electronic Subscriptions: \$5.00 or covered by full CRC membership \$10 per annum

Disclaimer: The editorial team accepts no liability for the accuracy of any of the information, any errors or omissions in this newsletter. The editorial team reserve the right to edit contributions as they see fit. Any views expressed are those of the contributor.

Brunswick CRC OP SHOP
Tuesday - Friday 9am-2.30pm